



Welcome to

# Kangaroo Island Catholic Community

(Part of the Adelaide Cathedral Parish)

**FIFTH SUNDAY IN ORDINARY TIME - YEAR A**

**Vol 11 : No 11**

## **KANGAROO ISLAND CATHOLIC PARISH**

Parish House: 22 Giles Street,  
KINGSCOTE, SA 5223  
Phone: 8553 2132

Postal address: PO Box 749,  
KINGSCOTE, SA 5223

Email: [cphkingscote@inet.net.au](mailto:cphkingscote@inet.net.au)

Web: [www.kicatholic.org.au](http://www.kicatholic.org.au)

## **ADELAIDE CATHEDRAL PARISH**

39 Wakefield St, ADELAIDE 5000  
Phone: (08) 8210 8155

E: [acp@acp.adelaide.catholic.org.au](mailto:acp@acp.adelaide.catholic.org.au)

## **PARISH TEAM CONTACTS**

### **PARISH ADMINISTRATOR**

Fr Anthoni Adimai

Phone: (08) 8210 8155

### **PARISH PASTORAL COUNCIL**

Mr Peter Clark (8559 5131)

### **FINANCE**

Mrs Helen Mumford (0408 367 009  
or [kimumford@bigpond.com](mailto:kimumford@bigpond.com))

### **PARISH NEWSLETTER**

Mrs Wendy Bennett (0475 894 755  
[wendygbenett@icloud.com](mailto:wendygbenett@icloud.com))

(All items for the newsletter must be  
received no later than Tuesday  
evening.)

## **CHILD PROTECTION**

We are a Child Safe Organisation  
which is committed to the care, well-  
being and protection of children and  
young people.

Mrs Helen Mumford

(KI contact - 0408 367 009)

Child Protection Unit 8210 8159

## **WEEKEND MASSES**

Kingscote at 9.30am

## **CONFESSION**

Kingscote at 9.00am  
(prior to Mass)

## **PRAYERS FOR HEALING**

Prayers for Healing and Renewal in  
the Church - Thursdays at 9.00am



## **FIRST READING**

*Isaiah 58:7-10*

Thus says the Lord:

Share your bread with the hungry,  
and shelter the homeless poor;  
clothe the man you see to be naked  
and turn not from your own kin.  
Then your light will shine like the  
dawn and your wound be quickly  
healed over.

Your integrity will go before you  
and the glory of the Lord behind  
you. Cry, and the Lord will answer;  
call, and he will say, 'I am here.'

If you do away with the yoke, the  
clenched fist, the wicked word, if  
you give your bread to the hungry,  
and relief to the oppressed, your  
light will rise in the darkness, and  
your shadows become like noon.

## **RESPONSORIAL PSALM**

*Ps 111:4-9*

*A light rises in the darkness for the  
upright.*

## **SECOND READING**

*1 Corinthians 2:1-5*

When I came to you, brothers, it was  
not with any show of oratory or  
philosophy, but simply to tell you  
what God had guaranteed. During  
my stay with you, the only  
knowledge I claimed to have was

about Jesus, and only about him as  
the crucified Christ. Far from relying  
on any power of my own, I came  
among you in great 'fear and  
trembling' and in my speeches and  
the sermons that I gave, there were  
none of the arguments that belong to  
philosophy; only a demonstration of  
the power of the Spirit. And I did  
this so that your faith should not  
depend on human philosophy but on  
the power of God.

## **GOSPEL ACCLAMATION**

*Jn 8:12*

*Alleluia, alleluia!*

*I am the light of the world, says the  
Lord; the man who follows me will  
have the light of life.*

*Alleluia!*

## **GOSPEL**

*Matthew 5:13-16*

Jesus said to his disciples, 'You are  
the salt of the earth. But if salt  
becomes tasteless, what can make it  
salty again? It is good for nothing,  
and can only be thrown out to be  
trampled underfoot by men.

'You are the light of the world. A  
city built on a hill-top cannot be  
hidden. No one lights a lamp to put  
it under a tub; they put it on the  
lamp-stand where it shines for  
everyone in the house. (Cont. page 4)



# Bulletin Board

## PLEASE KEEP THESE PEOPLE IN YOUR PRAYERS

**Sick:** Stephanie Langridge, Carmen Northcott, Joella Davidson

## February anniversaries:

Heather Barrett, Joan Marie Berden, Mary Clark, Phillip Deakin, Allice Ellick, Alfred Gray, Bernadette Hehir, Kenneth Howard, Ron King, Jamie Larcombe, Frank May, Tom Meaney, Allan Moray, Pat Pawelski, Horace Riley, Christopher Riley, Bert Willson

*Please pray for all the faithful departed and all our sick parishioners, relatives and friends.*

## PARISH ROSTERS

	Comm	Reader	Cleaning
5/2	L Grant	S Semmler	H Mumford
12/2	M Glynn	M Slagter	A Clark
19/2	S Semmler	A Gibbs	A Clark
26/2	L Grant	P Clark	C Berden

## PRIEST ROSTER

*(Often this roster changes if something unforeseen crops up)*  
05/02 TBA

## WEEKLY CONTRIBUTIONS

For those of you who wish to make your weekly contributions to the first and second collections by direct debit, these are the banking details for each.

1st Collection:  
BSB 085 005  
A/c No 585353994  
Reference: K Island or 765

2nd Collection:  
BSB 085 005  
A/c No 918111484  
Reference: Your name

## CARITAS AUSTRALIA PROJECT COMPASSION 2023

*(Commencing February 19)*  
“Each year, Project Compassion comes as a timely reminder of the importance of solidarity and how a single act of kindness – whether big or small, can make a life-changing impact in the lives of those who need it most.”  
*Kirsty Robertson, CEO, Caritas Australia.*

## 2023 LENTEN REFLECTION BOOKS

will be available again to all parishes across the Archdiocese. It is a prayerful resource that can be used in a

group setting or at home, this Lenten season. The Psalm and Gospel readings for each Sunday in Lent are included in the booklet along with reflections written by clergy and lay people in our Archdiocese and small group questions that are suitable from secondary students to adults.

## LOVE ADELAIDE

### Walk for Life

Saturday 11 February  
Pennington Gardens, North Adelaide  
- opposite St Peters Cathedral  
10.00am - 12.00 noon  
Gates open at 9.00am  
Free entry tickets available at [loveadelaide.org.au](http://loveadelaide.org.au)

## ASH WEDNESDAY

Ash Wednesday is on **February 22** this year. The earliest possible date for Ash Wednesday is February 4, with Easter on 22 March. However, none of us will need to worry about it being that early because it won't happen again until 2285. The latest date Ash Wednesday can occur is 10 March.

Ash Wednesday is always 46 days before Easter Sunday and marks the beginning of the Lenten season. Lent is traditionally a 40-day fast — a reference to the time Jesus spent being tempted in the desert — that seeks to prepare the believer's heart for the solemn remembrance of Jesus' death. It concludes and is followed by a joyous Easter Sunday celebration of the resurrection of Christ.

## ‘THE SOUTHERN CROSS’

The February issue of “The Southern Cross”, which includes a Back to School/student achievements feature, Pope Benedict tribute and all the latest news in our Catholic community, is available from this weekend.

## RETREAT WALK – SEMAPHORE

*Sunday Feb 26, 9.30am - 4.00pm*  
Organised by Jesuit and Ignatian Spirituality Australia, this contemplative walk is along the beaches of Semaphore, Adelaide. This is a (mostly) silent walk beginning with prayer and ending with shared reflection. The 7km walk is graded as ‘easy’ and is suitable for most ages and fitness levels.

Cost is \$25, meet at the carpark near the Semaphore Surf Life Saving Club, Point Malcolm Reserve, 343 Military Road, Semaphore Park.

Enquiries: 1300 392 636  
or [info@jisa.org.au](mailto:info@jisa.org.au)  
Register at <https://jisa.org.au/retreat/retreat-walk-adelaide-south-australia/>

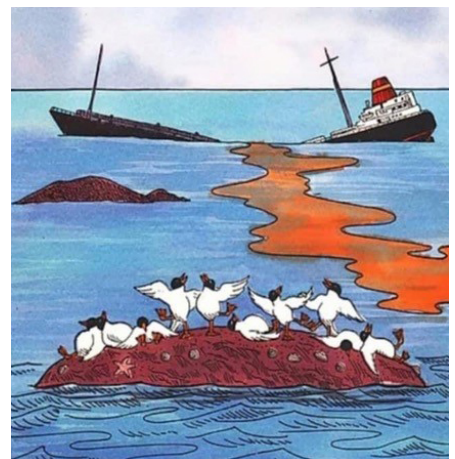
## DAY of the UNBORN CHILD APPEAL

A **Special Collection** will be held next weekend (11 and 12 February) to support the work undertaken by Birthline Pregnancy Support, Mothers without Medicare and Genesis Prenancy Support Inc.

The Day of the Unborn Child assists us to focus on those people in our families and communities who have experienced any sort of child-bearing loss, whether miscarriage, still-birth, the death of a baby soon after birth, or abortion.

## DATES

14 Feb	St Valentine's Day
16 Feb	KI Racing Carnival
22 Feb	Ash Wednesday
26 Feb	First Sunday of Lent
3 Mar	World Day of Prayer
13 Mar	Adelaide Cup Day
17 Mar	St Patrick's Day
14 Apr	Last day School term 1
6 Apr	Thursday of Lord's supper
7 Apr	Good Friday
8 Apr	Holy Saturday
9 Apr	Easter Sunday
10 Apr	Easter Monday
21 Apr	Marian Procession
25 Apr	ANZAC Day
1 May	First day School term 2
12 Jun	King's birthday
7 Jul	Last day School term 2
24 Jul	First day School term 3
29 Sep	Last day School term 3
2 Oct	Labour Day
16 Oct	First day School term 4
15 Dec	Last day School term 4



*After 200,000 litres of whisky leaked into the sea, no tern was left unstoned.*



## Ron Rolheiser column

Ronald Rolheiser, a Roman Catholic priest and member of the Missionary Oblates of Mary Immaculate. He is a community-builder, lecturer and writer. His books are popular throughout the English-speaking world and his weekly column is carried by more than sixty newspapers worldwide

### TO FALL IN LOVE

To fall in love! We use the expression to cover many things. You can fall in love with a baby, a sports team, a city, a job, or another person. However, we reserve the prime analogue for this expression for one thing, emotional infatuation, that intoxicating feeling we first get when we meet someone who we sense as a soulmate.

Iris Murdoch once wrote that the world can change in fifteen seconds because that's how quickly you can fall in love with someone. She's right, and falling in love emotionally can literally paralyze us with a grip so strong that even death seems preferable to losing the one with whom we have fallen in love. Countless heartaches, broken hearts, depressions, clinical breakdowns, suicides, murders, and murder-suicides testify to this. Emotional infatuation can be a deadly addiction, the most powerful cocaine on the planet. Where does it come from? Heaven or hell? And, what's its meaning?

Ultimately, God and nature are its author and that tells us that it is a good thing. We are built for this to happen to us. Moreover, it is a healthy thing, if properly understood, both in its intoxicating power and in its innate failure to be a sustaining power in love.

What happens when we fall in love so powerfully with someone? Are we really in love with that person or are we more in love with being in love and the feelings this brings us? As well, are we really in love with that person or are we in love with an image of him or her we have created for ourselves, one that projects a certain godliness on to that other?

Let me risk some answers. Imagine a man falling deeply in love with a woman. Initially, the feelings can be overpowering and literally paralyze

him emotionally. However, inside of all this, a certain question begs to be asked: with whom or with what is he really in love? His feelings? The archetype of femininity the woman is carrying? His image of her? She herself?

In reality, he is in love with all of these: his feelings, his image of her, she herself, and the divine feminine she is carrying. All of that is of one piece inside of his experience. As well, all of this can be healthy at this stage of love.

God invented emotional infatuation, just as God invented honeymoons. We are not meant to be drawn to each other by cold analytics alone. But, this kind of falling in love is an initiatory stage in love (albeit a delightful one) that needs to be understood exactly for what it is, an initiatory stage, nothing more, one that invites us into something deeper. Emotional infatuation is not yet a mature stage in love. Unless one dies in its grip, as did Romeo and Juliet, it will one day lose its hold on us and leave us disillusioned. When Iris Murdoch said that we can fall in love in fifteen seconds, she might also have added that, sadly, we can also fall out of love in fifteen seconds. Emotional infatuation can be that ephemeral, both in its birth and in its dying.

So falling in love (in this emotional way) comes fraught with certain dangers. First, there is the adolescent proclivity to identify this with deep love itself. Consequently, when the powerful emotional and psychosexual feelings let go, the person easily concludes that he or she is no longer in love and moves on. Next, more subtly, there is this danger. When we are in this initial gripping stage of love, our image of the other carries with it a certain godliness. What's meant by that? St. Augustine coined this timeless dictum: *You have made us for*

*yourself, Lord, and our hearts are restless until they rest in you.* Hence, nothing in life can ever really be enough for us. We are always restless, always yearning for something more. However, in this initial phase of love, when we have fallen into the grip of emotional infatuation, for a time *the other is enough for us.* That's why Romeo and Juliet could die happy. At this stage of love, they were enough for each other.

However, the hard truth is that infatuation does not last. The other person, no matter how wonderful he or she might actually be, is not God and can never be enough (and we are unfair to him or her when we unconsciously expect them to be enough). For a while, they are able to carry that godliness for us, but that illusion of godliness will eventually break and we will realize that this is just a person, one person, wonderful perhaps, but finite, limited, and not divine. That realization (which is ultimately meant to be the ground for mature love) can, if not understood, jeopardize or sour a relationship. God invented falling in love! In it, we get a little foretaste of heaven, though, as experience tells us, that is not without its dangers.

You can read, or download, Ron Rolheiser's weekly columns from his website at: [www.ronrolheiser.com](http://www.ronrolheiser.com)



"My phone looked huge when I first got it, but I think I'm ready to upgrade to something bigger."

## COMPLIANCE WITH COVID-19 REGULATIONS

(Current from 02/02/23)



- If you have tested positive for COVID-19 please stay home and do not attend church services until you have fully recovered.
- Wearing of face-masks in Church is strongly recommended.
- Sick and high risk/vulnerable people are requested to stay home.
- Hand sanitiser is available at church entrances.
- Communion is given only in hands.
- Holy Water is not available at the doors of churches.
- Procession of gifts has resumed.
- Collection plates are to be passed around with minimum contact

### DID YOU KNOW?

- In the ancient world, salt was essential. It was used not simply to season food or to add to its taste, but as a preservative, enabling food to be stored and kept.
- At the time of Jesus, the main source of oil for lamps was the olive. A saucer-shaped lamp held the oil, and a wick, made of flax or a similar material, burned from a small opening on the rim. Such lamps were often placed in a niche in the walls of rooms.
- Lamp oil was a precious commodity. Once lit, a lamp was often placed high to give maximum illumination.
- Ancient cities were often built on hilltops so that they were easily defended against invaders and were visible for many miles around.

### LITTLE MORNING MEDITATION

*You have been given this day to use as you will. You can waste it or use it to do good.*

*What you do today is important because you are exchanging a day of your life for it.*

*When tomorrow comes, this day will be gone forever and in its place is something you have left behind .... let it be something good.*

(Continued from page 1)

In the same way your light must shine in the sight of men, so that, seeing your good works, they may give the praise to your Father in heaven.'

### FOR THE SAKE OF OTHERS

(Matthew 5: 13 - 16)

The disciples are called "the salt of the earth" and "the light of the world". Consequently, their success will rest on not drawing attention to themselves. As salt is used for preservation and purification, the disciples are called to preserve what is good and purify what hinders God's reign. They cannot allow themselves to become "tasteless salt" that is diluted or dissolved by the cares and worries of the world. As light moves beyond itself and illumines objects in a room, the disciples are called to look beyond themselves by doing good works. This will lead others to glorify God, whom Matthew, for the first time, refers to as "your heavenly Father".

Ponder: How will I live out my vocation as salt and light?

### SYMBOLS AND IMAGES

The people of Israel often described the Law of God as 'salt' because it gave zest and flavour to life and it preserved them as the people of God. Similarly, the Law was often compared to a light that showed them the path to God: 'Your word is a light to my feet and a lamp to my path' (Psalm 119:105). Jerusalem, the city on the hill, was a focal point and reminder of God's presence. Jesus gives a new focus to all these images when he applies them to those who hear his word and put it into practice. All Christians are called to be 'salt' and 'light', a 'city on the hill' giving witness to God's presence.

### GIVE FREELY AND OPENLY

When Beth unexpectedly inherited a large amount of money, she was scared. She had never managed such a sum before, and she was intimidated by the prospect of handling this responsibility correctly. Her future would be secure as long as she didn't make any mistakes, so she set about learning how to invest wisely and working with trustworthy, expert professionals. And she resisted the

temptation to spend too much of it!

Through the process, she discovered confidence in herself. She could make smart financial decisions. That confidence led her to want to do more with the money - she wanted to help people with it and apply her newfound savvy. She became a philanthropist and she developed strategies to maximise the effectiveness of her gifts - one of which was widely telling others that she was giving to. She found her listeners then started donating to the same causes. She encouraged women in particular not to give anonymously, not to be too humble about their giving - in order to help other women realise they could do the same. It's not bragging if your intentions are charitable. Don't put your lamp under a basket indeed!

You can bring change by:

- Knowing the faithful way.
- Working quietly from the inside.
- Being ready to take the long-term approach.
- Listening to different points of view.
- Being willing to find the facts.
- Taking the time that is needed.
- Refusing to give in or give up.
- Shining light on the darkest path.

Bringing change is the way of Jesus Christ. *GPBS eNews*

### THIS WEEK'S READINGS

(06 - 12 February)

- **Monday, 06:** St Paul Miki and companions (Gen 1:1-19; Mk 6:53-56)
- **Tuesday, 07:** Weekday Ord Time 5 (Gen 1:20 - 2:4; Mk 7:1-13)
- **Wednesday, 08:** Weekday Ord Time 5 (Gen 2:4-9, 15-17; Mk 7:14-23)
- **Thursday, 09:** Weekday Ord Time 5 (Gen 2:18-25; Mk 7:24-30)
- **Friday, 10:** St Scholastica (Gen 3:1-8; Mk 7:31-37)
- **Saturday, 11:** Weekday Ord Time 5 (Gen 3:9-24; Mk 8:1-10)
- **Sunday 12:** 6<sup>th</sup> SUNDAY in ORDINARY TIME (Sirach 15:15-20; 1 Cor 2:6-10; Mt 5:17-37)

### PASTORAL CARE

If you need a priest for anointing prior to medical treatment, or if you are ill (not necessarily life-threatening) or for last rites please contact: (08) 8210 8155 or in an emergency 0417 080 955